



DEFINING

UNDEFINABLE



C H O A T E

R O S E M A R Y

H A L L



CHOATE

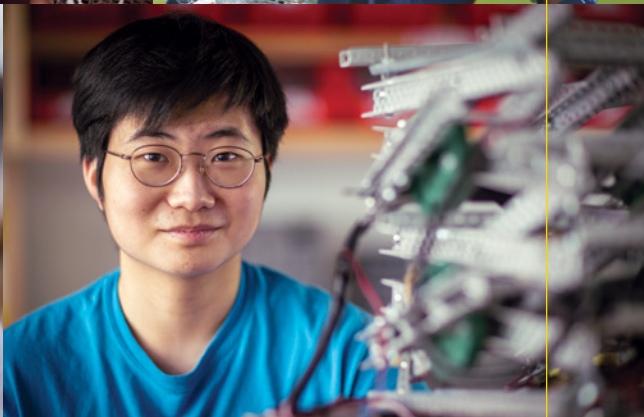
You are

# NEVER ONE THING.

Never one simple, singular story. You're the sum of everything you've ever done, and everything you want to do next. Every interest. Every talent. Every experience. **You can't be defined.** At Choate that's exactly what we champion. Here, it's not about breaking the mold, because there is no mold. There's no typical. No predetermined path. **Instead, we create an environment designed to bring out the best in who you are, and to help you become everything you want to be.**

*If you want to be part of a dynamic and energetic learning community, we welcome you to consider joining us at Choate Rosemary Hall.*









## How do we tell the Choate Rosemary Hall story?

It might be tempting to talk about our past. It might be interesting to give a rundown of famous alumni. It might seem like we should start with a black and white picture, from some other time, and talk about what has always been the Choate way. But you can look that up online. So let's look forward, because we're here to inspire and shape what comes next.



OUR SCHOOL UPON THE HILLSIDE

We put progress over tradition because we believe in broadening opportunities and expanding perspectives. We believe in trying new things and testing new methods. We believe in embracing opportunities to help you progress on your journey toward defining the undefinable, just as we have for over 18,000 graduates during the past 130 years. Our students are guided by energizing educators who are experts at introducing the craft of how to think and not what to think.





Everything

you  
NEVER  
EXPECTED



THE 24/7 EXPERIENCE

Minds  
always

O P E



CHOATE ROSEMARY HALL



## LEARNING DOESN'T STOP AT 3PM.

As a student at Choate, you'll get to explore your interests and pursue your passions well beyond the boundaries of a normal school day. When you live and learn here, the entire campus becomes your classroom, and there are opportunities for exploration everywhere you look. Your teachers are not just teachers – they're coaches, dorm advisers, and mentors who share your dinner table. It's an immersive, transformative experience designed to prepare you for the future. And you'll find that when your mind is always open, you never stop learning.

Whether you join us as a boarding student or day student, you will benefit from the 24/7 opportunities to engage within a diverse and dynamic community. Our values permeate large, energetic dormitories, small close-knit houses, and day student adviser groups. Every student experience provides the chance to learn lessons that are of equal importance as those taught in the classroom.

*By living and learning with other students and adults from around the world, you learn:*

- How to live as responsible members of society
- How to respect fellow students and adults
- How to treat the environment with care and responsibility
- How to embrace and grow from each other's differences
- How to take full advantage of robust campus-life opportunities
- How to discover the best version of you

## COMMUNITY AT A GLANCE

States Represented **41** | Students to Faculty Advisers **4:1**

Teaching Faculty Residing on Campus **88%** | Students of Color **39%** | International Students **18%** | Boarding Students **73%** | Students dedicated to exploring their passions **100%**



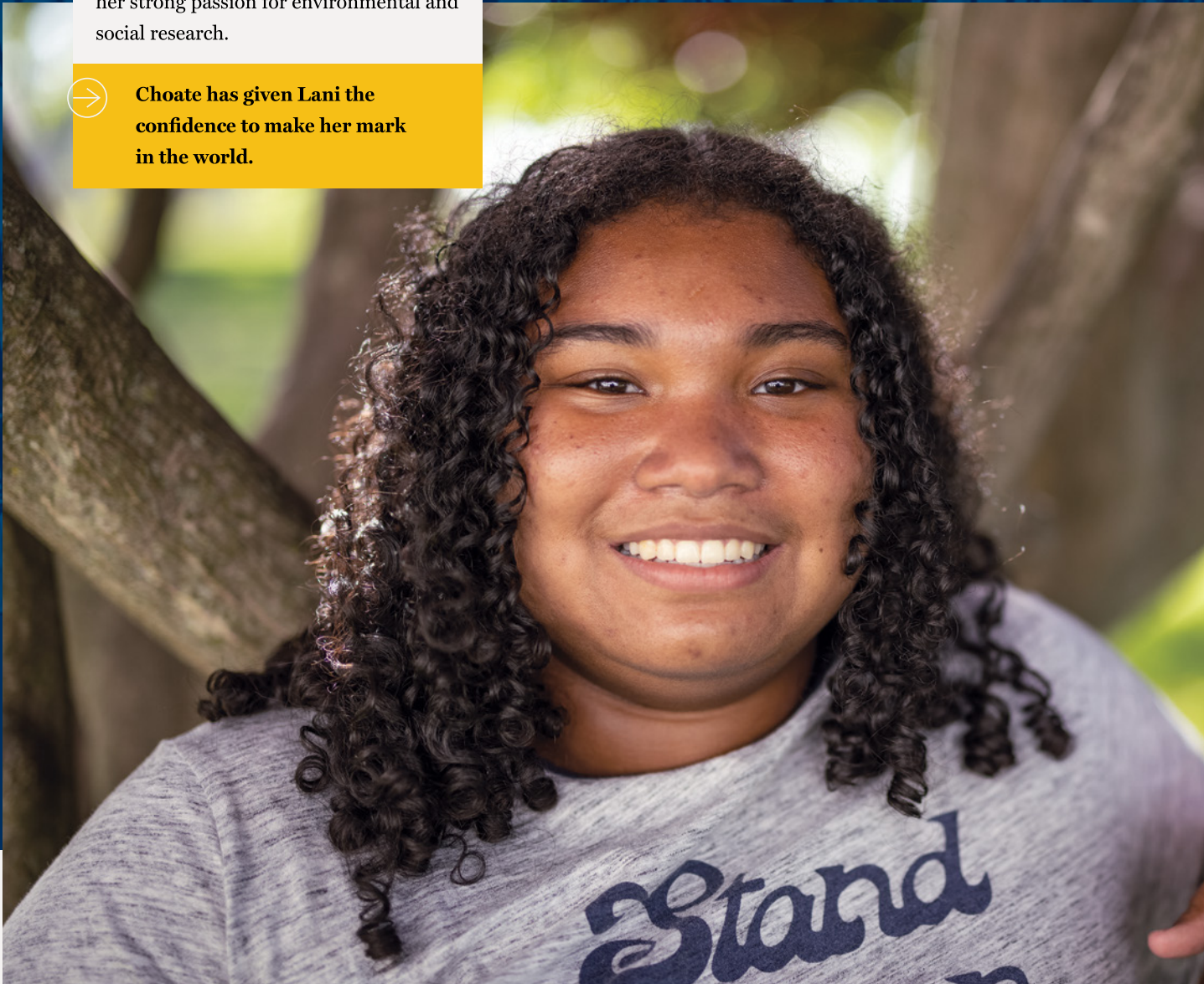
# LANI

As a city girl who longed for trees and flowers, Lani felt out of place living in the inner city. She entered Choate searching for a sense of belonging and held her teachers and advisers as prized resources. Yet, as Lani says, it's always a two-way street at Choate. The faculty are equally interested in the students, and want to know how they're personally feeling. It's a community that encouraged her to pursue her strong passion for environmental and social research.



**Choate has given Lani the confidence to make her mark in the world.**

**"TO ME, THE COMMUNITY AT CHOATE CAN BE DESCRIBED IN THREE WORDS: CURIOUS, SUPPORTIVE, AND STRONG."**







# MAC

Adolescent years can be a juggling act for many students, as Mac learned at the start of his academic journey at Choate. As a 3-sport athlete, he found it challenging to manage his time between classes, extracurriculars, and everything in between. But with the support of his adviser, teachers, coaches, and friends, Mac found solid footing balancing his priorities. He currently gives campus tours as a Gold Key Tour Guide, where he shares his experience with prospective students as they embark on the transition to high school.



**At Choate, Mac learned that you don't need to go it alone.**



# RYAN

When you think of a private school, you may think of ivy-covered buildings and a rigid curriculum. However, Ryan found out this couldn't be further from the truth at Choate. Ryan gets to choose from a selection of diverse activities, whether it's symphony orchestra, math team, or tech theater. He created a schedule of courses that are intellectually stimulating and uniquely catered to his goals and interests.



**Ryan appreciates how Choate gives students the independence to become their own person.**



A young woman with dark hair and glasses is smiling while playing a violin. The background is a warm, bokeh-lit indoor space. The name 'MAYA ROSE' is overlaid in large, bold, yellow letters on the right side of the image.

# MAYA ROSE

"LIFE AT CHOATE IS EXCITING

AND CAN BE VERY FAST  
PACED. GET READY TO DIVE  
RIGHT IN AND DON'T BE  
AFRAID TO PUT YOURSELF  
OUT THERE, FROM SOCIAL  
SITUATIONS TO CLASSROOM  
DISCUSSIONS. EVERYONE  
HERE JUST WANTS TO HELP  
YOU LEARN AND GROW."

Much of life is about choices. Choosing what to wear, where to go and even what we want for dinner tomorrow can impact how we experience the road ahead. For Maya Rose, the most important choice she made was Choate. It's where she was presented with the opportunity to play at the John F. Kennedy Center in Washington, DC with the Symphony Orchestra. She also chose to take advantage of Choate's special Science Research Program and join the Choate South Asian Student Association. This gave her the extra boost to help navigate the past year as a South Asian student and allowed Maya Rose to share her culture with the rest of the community!



**Maya Rose is so grateful for the doors she's been able to open by becoming a Choate student.**



# BRECKEN

Whether in the Andrew Mellon Library or in the classroom, Brecken's perspective never ceases to broaden. Her favorite course, Contemporary Issues, allowed her to reconsider ideas – even ones she thought she already knew. When class is dismissed, her day isn't over. She participates in extracurriculars that cater to her interests: basketball, soccer, art, and clubs that motivate her to see the world from different angles. Clubs like Choate for Women, that grow her awareness and knowledge of social issues to be a better advocate and ally to others.



**For Brecken, Choate offers the space to expand, explore, and experience her full potential.**





# ZEPHYR

Zephyr doesn't have just one thing he loves about Choate; he loves how it's all connected. His Honors World History class introduced him to the JFK program, which in turn added International Relations to his growing list of interests right under art and lacrosse. And because everyone is ready to help each student improve, Choate surpassed all of Zephyr's expectations of what a boarding school could be like in every category.



**Zephyr has learned that at Choate, your interests keep expanding and you will be supported to pursue all of them.**

"WHETHER IT'S ON  
THE LACROSSE FIELD,  
AT THE PMAC, OR IN THE  
CLASSROOM, I WANT TO  
ALWAYS HELP PEOPLE, JUST  
LIKE CHOATE DID FOR ME."



# ATHENA

The transition to a new school can be hard, but Athena discovered that home can be found in more than one place. Choate has given her a wide array of opportunities to engage in her passions, whether taking high-level psychology courses or joining the School's dance company. She gained so much confidence she even ran for student council and now serves on the Judicial Committee – ready to lead the upcoming classes of Choate. Exploring these interests also meant finding other like-minded people who Athena can count on and learn from during this transformative period of her life.



**At Choate, Athena found her voice and is ready to share it with others.**





# HENRIK

"THE COMMUNITY IS WHAT SETS US APART. SEVERAL LAYERS OF SUPPORT SYSTEMS – WHETHER THEY BE FRIENDS, PREFECTS, ADVISERS, DEANS, OR TEACHERS – GENUINELY WANT YOU TO SUCCEED AND WILL STAY BY YOUR SIDE."

Coming into your own is way less daunting when you have a supportive environment like the one Choate provides. In awe of all the possibilities available to him, Henrik learned firsthand how the School helps students mature to become the best versions of themselves. At Choate, Henrik developed the courage and leadership skills that turned his uncertainty about the future into an opportunity to create it.



**For Henrik, it's the friendships and collaborative encouragement that he will take with him for life.**



This is your laboratory

This is your stage

This is your sanctuary

This is your arena

This is your testing ground

# This is yours to **EXPLORE**



Release your poetry as spoken word or amplify the mood with your music at **Colony Hall**. Seating up to 1,070 people, this recital hall and auditorium is the liveliest place to connect with your artistic community. This hall also includes a music classroom wing with a rehearsal space for Choate's major music ensembles.

Invent the future at our state-of-the-art **Lanphier Center**. Home to our award-winning Robotics Team and i.d.Lab, this facility is designed to support hands-on learning, team-based collaboration and creativity.

Discover how sustainable concepts stretch far beyond campus at the **Kohler Environmental Center (KEC)**. The KEC is home to Choate's Sustainable Food Project and the interdisciplinary Environmental Immersion Program (EIP), a year-long residential Signature Program.

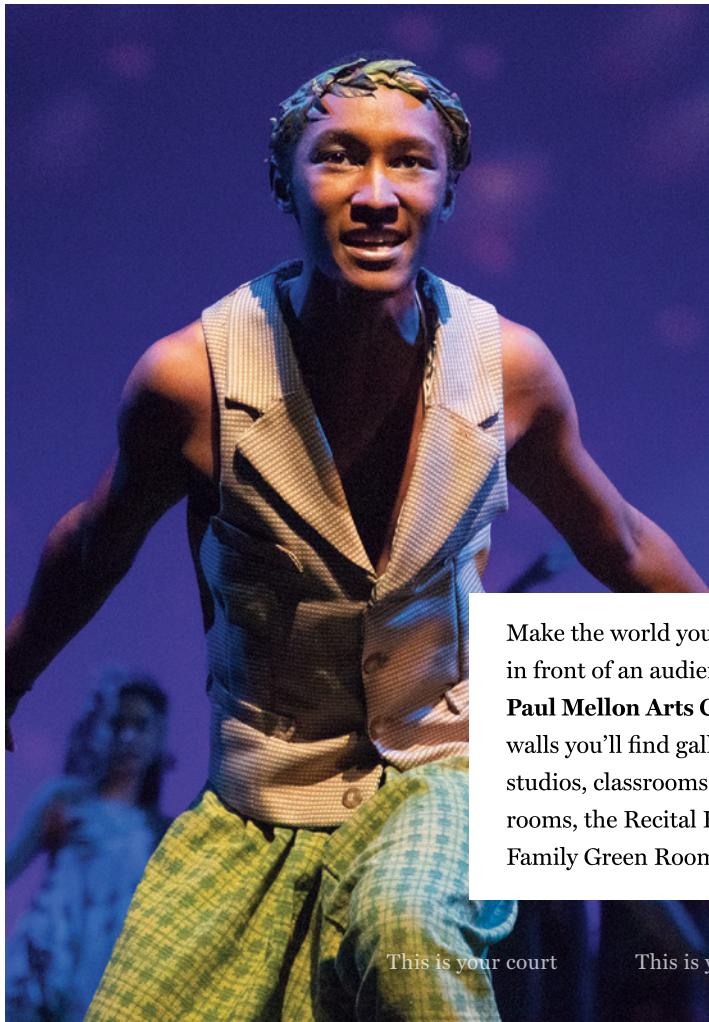






Form friendships that will last a lifetime inside the **St. John Hall Student Center**. This beautiful educational and social hub was designed with student life at its core, featuring a game room, video room, common spaces, club meeting rooms, the Tuck Shop café, and more.

Take your scientific method to the next level at the **Carl C. Icahn Center for Science**. Home to the signature Science Research Program, the Icahn Center for Science is built for exploration with 22 classrooms and laboratories, a study area, a conservatory, and the 150-seat Getz Auditorium.



Make the world your stage and perform in front of an audience of 770 at the **Paul Mellon Arts Center**. Within these walls you'll find gallery spaces, fine arts studios, classrooms, music practice rooms, the Recital Hall, and The Katz Family Green Room.



Leap from the classroom and into your passions at the **Andrew Mellon Library**. Explore your pursuits with 168,000 titles, over 100,000 eBooks, and more than 50 academic databases at our library, and you'll find endless inspiration at your fingertips.

This is your court

This is your launchpad

This is your think tank

This is your home





In every question

that tests **OUR IMAGIN**

we find **OUR PURP**

---







# ATION, OSE.

THIS IS WHERE

Minds are opened.

Possibilities are considered.

Intuition is acknowledged.

Dreams are fostered.

**Theories are tested.**

Realities are rethought.

Talents are discovered.

Assumptions are proven.

Skills are honed.

Ideas are welcomed.

Perspective is shifted.

Explore what comes next.



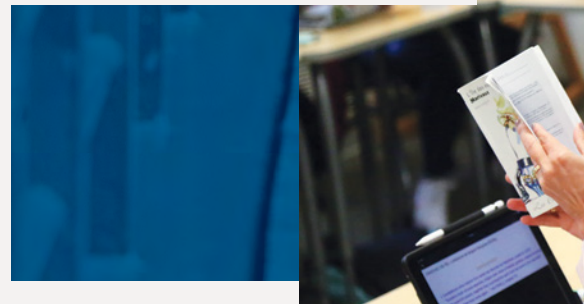


Learn how to

# THINK

~~Not what to think~~

Choate offers an intentional balance of character development and rigorous curricular experiences. We work each day to build a culture and community that allows teachers and students to learn from each other in truly authentic and dynamic ways. We inspire each other with a commitment to action to be a positive force in the world by developing an interconnected understanding and adaptability.







## DERON CHANG

DIRECTOR OF CURRICULAR INITIATIVES,  
BIOLOGY TEACHER, HOUSE ADVISER, SOCCER COACH



As one of the top independent schools in the country, Choate sets itself apart with passionate leaders who are relentlessly improving the student experience; leaders like Deron Chang, Director of Curricular Initiatives. He believes that an effective education goes beyond lecture halls and scribbling notes in a notebook. It's about encouraging students to apply what they've learned to hands-on activities that enhance their unique creativity and problem solving skills, setting them up for success in college and a rapidly changing world beyond Choate.

"IT IS ESSENTIAL FOR OUR STUDENTS' FUTURE SUCCESS TO GET OUT OF THE TRAP OF USING THEIR BRAINS LIKE COMPUTER HARD-DRIVES."



**For Deron Chang, the curriculum that suits Choate students is adaptable, creative, and current.**





SEEN

Something  
you've never

THOUGHT

FELT

MAD

HEARD

Your voice is a statement.

Your voice is a point of view.

Your voice is a question.

Your voice is who you are.

Your voice is a reflection.

Your voice is a meditation.

Your voice is a part of something bigger.

Your voice can be seen and heard.

Your voice can be quiet, but powerful.

Your voice can be loud, but civil.

Your voice can echo those you admire.

Your voice is something completely your own.

Your voice can be steady.

Your voice can be revolutionary.

**Your voice is what the world needs.**



A woman with dark curly hair, wearing a teal and gold sequined dress, is performing on stage. She is looking upwards and to the left, with her right arm raised and hand open. The background is dark, and the lighting is dramatic, highlighting her face and dress. The letters 'HT' are visible in the top left corner.

# HT

Here, you are more than just the star of your show. You're the author of the screenplay, a key player in the band, and the designer of the set that brings something new that the world has never seen. Choate offers multiple outlets for developing your craft, tools to hone your talents and mentorship to guide your creativity alongside others that are just as curious and collaborative as you. Giving you lanes to explore and express your passions like never before.



At the heart of our commitment to wellness is ensuring you feel a sense of belonging and support every day. We recognize that balancing day-to-day activities, a rigorous curriculum, and a social life can be a challenge. That's why we welcome and celebrate all backgrounds in ways that continue to raise awareness for a healthy and diverse learning environment.

Finding

# BALANCE &

# BELONGING

Every day, Choate is ensuring a balance of responsibility and autonomy for students to be active participants within Choate's vibrant community. Encouraging understanding of differences in race, gender, ethnicity, religion, socioeconomic class, geographical origin, and sexual orientation. Setting you up to successfully navigate the real world in your future educational pursuits, and for the rest of your life.



**DR. RACHEL MYERS,**  
*Dean of Equity  
and Inclusion*

## TRUST & INCLUSIVITY

For Dr. Myers, having an open dialogue is vital for ensuring a sense of belonging for all of Choate's students.

*"The more we all get to know one another, the more that foundational trust is established in our everyday interactions and the culture of the School."*

## WIDEN YOUR WORLD

When Adrienne arrived at Choate, she was excited to meet other students from far and wide. Forming tight friendships, from a boarding school in Connecticut has connected Adrienne to the entire world around her.

*"Meeting people from all over the world, from different schools of thought and life experiences is the reason I came to Choate."*

**ADRIENNE**

## OPPORTUNITIES FOR CHANGE

Henry's view of teachers changed when he attended Choate. His teachers were more lenient, collaborative, and forgiving than he expected. Here, faculty are more understanding when it comes to balancing the demands of all his classes. Now, even when it gets stressful, he knows he can always seek guidance and support from his teachers.

**HENRY**

## SHARING THE JOURNEY

High school can be a bumpy ride at times, and Nancy Miller is ready to ride along for the journey. During her many years as Form Dean, she has watched the academic and personal evolution of student lives. So when graduation comes, she feels a sense of pride as she hears them called to the stage.

**NANCY  
MILLER,**  
*Form Dean*



THIS IS YOUR MOMENT.

THE MOMENT YOU WILL TALK ABOUT FOR YEARS TO COME.

WHEN YOU REALIZE YOU HAVE WHAT IT TAKES.

WHEN YOU KNOW WHERE YOU BELONG.

# LIVE every

THE MOMENT YOU FEEL STRONGER THAN EVER.

THIS IS WHERE YOU FIND MEANING.

WHERE YOU DISCOVER SOMETHING ABOUT YOURSELF.

THIS IS WHERE YOU FIND OUT WHAT'S NEXT.

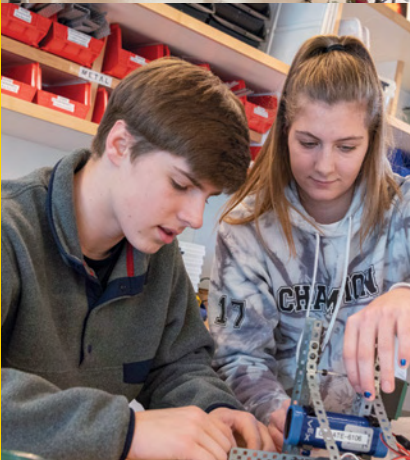
THIS IS YOUR TIME

CHOATE ROSEMARY HALL

At every turn, Choate is more than what you'd expect from your typical high school. It's a rare, life-changing experience that balances academic, athletic, and artistic performance to ensure you can seize every moment with self-discovery and confidence. Ready to make informed decisions with a set of uniquely developed core characteristics and skills intended for adaptability in today's rapidly changing world.



# MOMENT



**20 YEARS** from now, when you bump into an old friend, you'll both talk about how you wish you were here right now.

Moment by moment,  
building a life,  
uniquely your own.



Take the

# STEP NEXT NOW

**APPLY NOW: [CHOATE.EDU/ADMISSION](https://choate.edu/admission)**

**CONTACT THE  
ADMISSION OFFICE**

**(203) 697-2239**

**[admission@choate.edu](mailto:admission@choate.edu)**

Choate prohibits in all its programs discrimination against or harassment of any member or group based upon age, gender, race, color, religion, disability, sexual orientation, gender identity or expression, national origin, genetic predisposition, ancestry or other categories protected by Connecticut or federal law. It does not discriminate on these bases in the administration of its admission process, educational policies, scholarship and loan programs, athletics, or other school-administered programs.



## SUSTAINABILITY IN ACTION

At Choate, we are committed to learning, teaching, and modeling what it means to be socially, economically, and environmentally responsible; challenging community members to take personal responsibility for individual and collective actions; modeling sustainability education for K-12 institutions; and promoting sustainability locally and globally. In so doing, we hope to guarantee that present and future students can enjoy the beauty, diversity, and resources of the earth for generations to come.

As part of our commitment to environmentally sustainable practices, this booklet is produced with Rolland Enviro® Print paper. This paper contains 100% post-consumer fiber and is manufactured using renewable energy, contributing to the smallest environmental footprint in North America's paper industry.

*Learn more about Choate's commitment to environmental sustainability at:*  
[choate.edu/about/sustainability](http://choate.edu/about/sustainability)



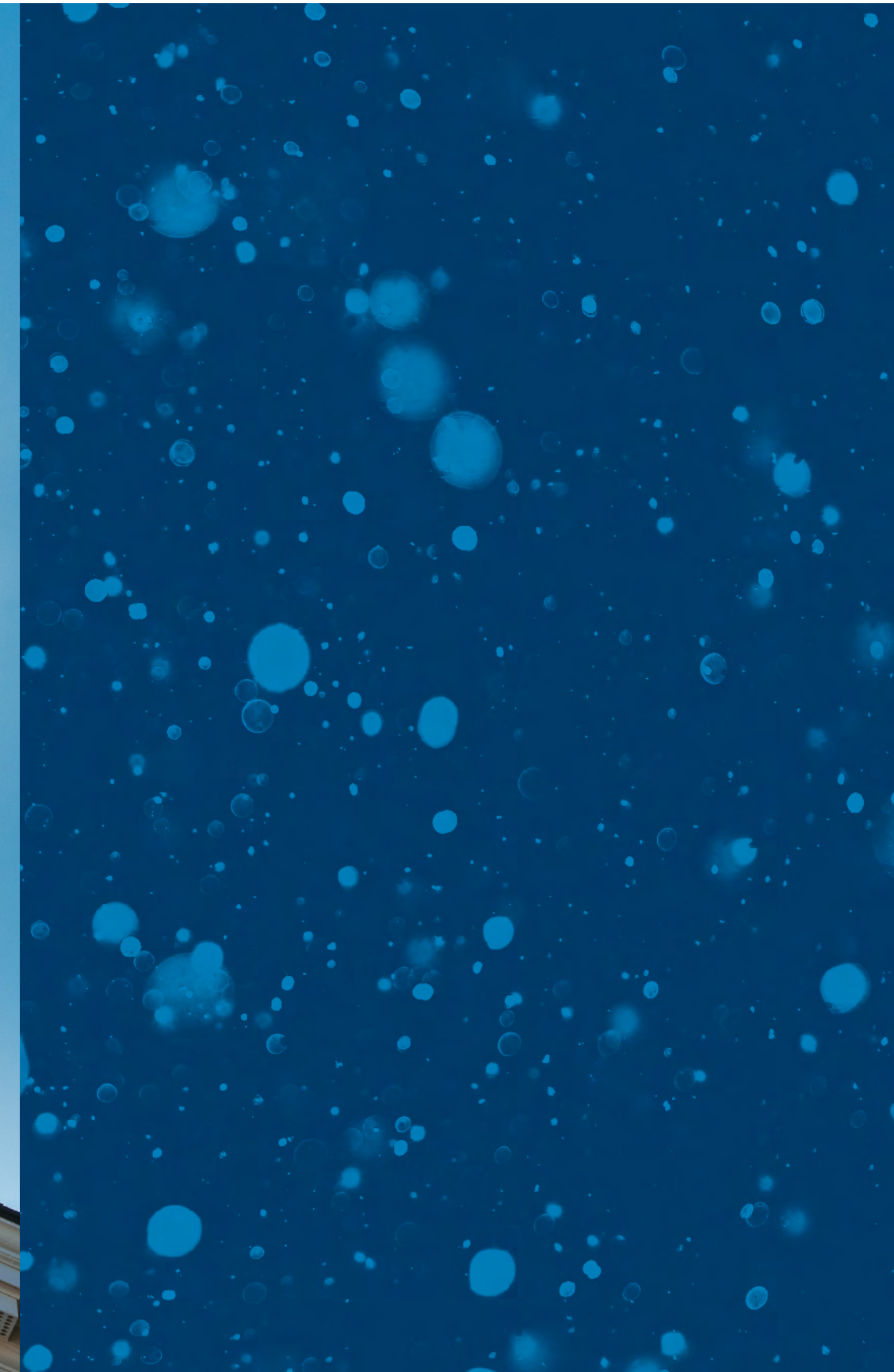


DEFINING

UNDEFINABLE









DEFINING

UNDEFINABLE



Take the



CHOATE  
ROSEMARY HALL

333 Christian Street • Wallingford, CT 06492