



THIS IS
YOUR YEAR

to
Shine!

what's inside?
PUZZLES
GAMES
COLORING PAGES
STICKERS
& more!



2022 INTERACTIVE CALENDAR
CREATED FOR *you* BY GIRLS PREPARATORY SCHOOL

Back to School!

YOU HAVE A BIG YEAR AHEAD—we know you'll do great! Right before school starts at GPS, our new sixth-graders experience the Cat-Rat reveal. Cat-Rat is a fun program where every sixth-grader gets paired up with a senior—it's kind of like having a big sister! At the reveal, you'll spot your Cat because she'll be matching you. Sometimes they make matching T-shirts, headbands, or sunglasses, and other years it may be hats or even tutus!

HELP THESE CATS FIND THEIR RATS!



Hold a phone or tablet camera over this QR code to experience all the excitement surrounding the first day of classes at GPS!

Scan me!



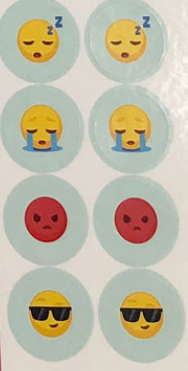
AUGUST
WEDNESDAY

I AM A
Strong
 BEAUTIFUL
CONFIDENT
 Fearless
GIRL

Bonus! Tear this page out and hang it on your wall to use as a mantra all year long!



THIS WEEK	THIS WEEK	THIS WEEK	THIS WEEK	THIS WEEK	THIS WEEK
NOTES	NOTES	NOTES	NOTES	NOTES	NOTES
Important	Important	Important	Important	Important	Important
DON'T 4GET	DON'T 4GET	DON'T 4GET	DON'T 4GET	DON'T 4GET	DON'T 4GET



Go Team!

**WE ARE
THE BEST,
WE ARE
G-P-S!**

May is a special time for sports at GPS, since several state championships take place this month. Did you know there are **TWELVE DIFFERENT SPORTS** you can try in Middle School and **FIFTEEN** in Upper School at GPS? You can play a sport you've played in elementary school or try a new one! We always encourage you to step out of your comfort zone—after all, you may find a new favorite!

SHOW YOUR SCHOOL SPIRIT!

Scan me!



Hold a phone or tablet camera over this QR code and click the link to learn this cheer!



MAY

TUESDAY

WEDNESDAY

MONDAY

March at GPS means it's time for our MIDDLE SCHOOL PLAY and rehearsing for the April UPPER SCHOOL MUSICAL! Boys from McCallie come over after school for practice, which is fun. If you've ever performed in a theater production, you know how much work goes into putting a show together, but it's so worth it! There are roles for everyone—you can sing, act, dance, or even run the lights or help manage the cast and crew behind the scenes if being on stage isn't your thing.

Lights, Camera, Action!

Use the clues below to solve the puzzle!

ACROSS

- 3. No performance is complete without one
- 5. The action happens on here
- 7. When this opens, it's showtime
- 8. The right outfit changes everything
- 10. Makes everything brighter

DOWN

- 1. Take your cues from this person
- 2. Put it all over your face
- 4. Who the actors want to entertain
- 6. The one at GPS has hundreds of seats
- 9. Be sure to hit all the right notes



ANSWER



MARCH

If I could participate in a theater production, I would want to _____.

GPS Fun Fact

A special harness was used to help lift Mary and her friend Bert into the air during a few scenes. While it looked really cool, it took a lot of practice to get it just right.

When our school put on the musical *Mary Poppins*, a couple of the actors actually flew across the stage!

SUNDAY MONDAY TUESDAY WEDNESDAY THURSDAY FRIDAY SATURDAY

1	2	3	4	5
6	7	8	9	10
11	12	13	14	15
16	17	18	19	20
21	22	23	24	25
26	27	28	29	30
31				

DAYLIGHT SAVING TIME

PI DAY

INTERNATIONAL WOMEN'S DAY

ST. PATRICK'S DAY

HOW ARE YOU FEELING TODAY?

PLACE EMOJI STICKER HERE

TERPSICHORD SPRING CONCERT

MS PLAY AT MCCALLIE

MS PLAY AT MCCALLIE



Where everything begins and ends with
what is best for girls.



GIRLS PREPARATORY SCHOOL
GPS.edu

205 Island Avenue | Chattanooga, Tennessee | 37405

© 2022 Girls Preparatory School | All Rights Reserved



what's inside?

PUZZLES
GAMES
COLORING PAGES
STICKERS
& more!

THIS IS
YOUR YEAR

to
Shine!

2022 INTERACTIVE CALENDAR

CREATED FOR *you* BY GIRLS PREPARATORY SCHOOL



CAN YOU BELIEVE YOUR SCHOOL YEAR
IS HALFWAY OVER ALREADY?!

TIME FLIES
WHEN YOU'RE
having fun!

We hope you've had an incredible year full of fun and adventure so far, and that you can enjoy some rest and relaxation before heading back to school in January.

The beginning of a new year is always a great time to get organized, and we want to help you keep track of all the exciting things you have coming up!

In this Interactive Calendar,

YOU'LL FIND:

FUN FACTS
ABOUT GPS

COLORING
PAGES

IMPORTANT
DATES
(Special GPS
dates are marked
with our bow!)

ACCESS TO
SPECIAL GPS
VIDEOS

FILL-IN-THE-BLANK
QUESTIONS
ABOUT YOUR
HOPES AND
DREAMS

WORD
GAMES
AND
PUZZLES



LOOK FOR YOUR
INVITATIONS TO
UPCOMING
ADMISSION EVENTS
with stickers to add
to your calendar!

& in the
back,
STICKERS TO
MARK SPECIAL
BIRTHDAYS,
EVENTS, MOODS,
& MORE!

THIS YEAR I WILL BE

stronger,

BRAVER,

KINDER &

unstoppable.

I WILL BE FIERCE.

—RACHEL EILENE, AUTHOR

Happy
New Year!

With each new year, it's always nice to look back on the previous year and make mental notes. Are you proud of what you accomplished? Were you a good friend? Did you help your parents around the house? Did you try anything new? January is also a great time to set goals for the new year. Are there books you'd like to read or new foods you want to taste? Is there an activity you've always been interested in but a little nervous to try? **GIVE IT A SHOT THIS YEAR!**

Bonus!

Tear this page out at the end of the month and hang it on your wall to use as a mantra all year long!

JANUARY

SUNDAY



TUESDAY

WEDNESDAY

THURSDAY

FRIDAY

SATURDAY

GPS Fun Fact

Each senior gives a Chapel Talk to the entire school and her invited guests. She wears her white uniform, stands on stage in Frierson Theatre, and shares her thoughts on whatever subject she chooses. At Commencement, the seniors are given a Chapel Talk Book that contains all their classmates' talks, so they can reread them for years to come!

NEW YEAR'S DAY 1

2

3

4

5

6

7

8

9

10

11

12

13

14

15

16

MARTIN LUTHER KING JR. DAY

17

18

HOW ARE YOU FEELING TODAY?

19

20

21

22

PLACE EMOJI STICKER HERE

23

24

25

26

27

28

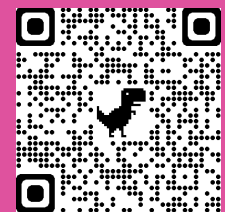
29

30

31

A goal I have for the new year is _____.

Scan the below QR code to watch a Chapel Talk.



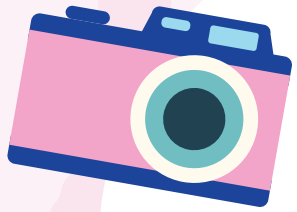
Scan me!

Adventure Awaits!

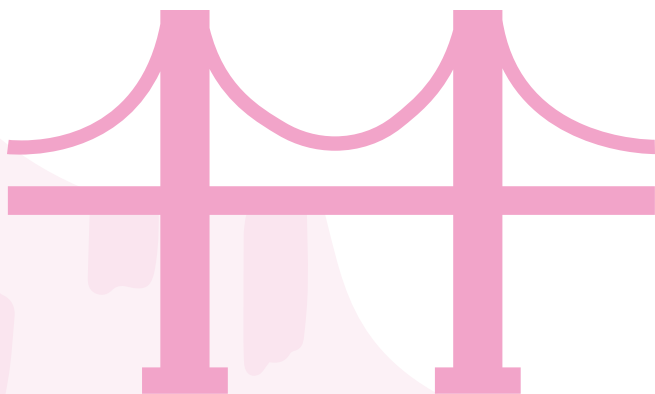
February is a big deal at GPS because it's when we have **WINTERIM**. You may have a winter break at your elementary school—this is kind of like that except we plan lots of activities together! In sixth grade, our students spend time exploring Chattanooga with fun adventures and activities all around town. They may create tessellations (tiles with geometric shapes) at a local pottery studio one day, dig for dinosaur bones the next, and visit a farm for yoga and hiking the next! In Upper School, students can even visit other countries!

SEE HOW MANY WORDS YOU CAN MAKE FROM THE LETTERS IN

WINTERIM



_____	_____
_____	_____
_____	_____
_____	_____
_____	_____



FEBRUARY

SUNDAY

MONDAY

TUESDAY

WEDNESDAY

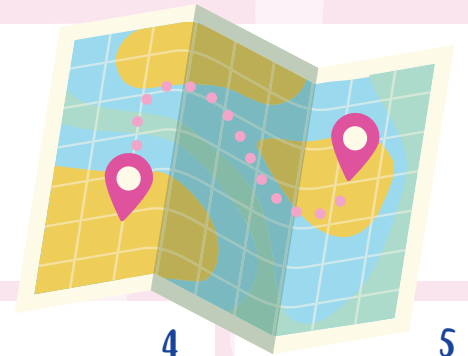
THURSDAY

FRIDAY

SATURDAY



If I could visit *another country*,
it would be _____.



LUNAR NEW YEAR
& BLACK HISTORY
MONTH BEGINS 1

GIRLS & WOMEN
IN SPORTS DAY 2

3

4

5

6

7

8

9

10

11

12

13

VALENTINE'S DAY 14

15

16

17

18

19

GPS WINTERIM
BEGINS

20

PRESIDENT'S DAY 21

22

WHAT'S THE
WEATHER LIKE
TODAY? 23

PLACE
WEATHER
STICKER
HERE

24

25

26

27

28

GPS Fun Fact

In recent years, students have visited places as far away as Chile, Spain, and Rome during Winterim. Some adventurous girls have ridden horses at a dude ranch in Arizona or steered dog sleds across snowy fields in Minnesota. Even those who stay close to Chattanooga learn to knit, hike, bake, or balance a bank account during Winterim!

March at GPS means it's time for our **MIDDLE SCHOOL PLAY** and rehearsing for the April **UPPER SCHOOL MUSICAL!** Boys from McCallie come over after school for practice, which is fun. If you've ever performed in a theater production, you know how much work goes into putting a show together, but it's so worth it! There are roles for everyone—you can sing, act, dance, or even run the lights or help manage the cast and crew behind the scenes if being on stage isn't your thing.

Lights, Camera, Action!

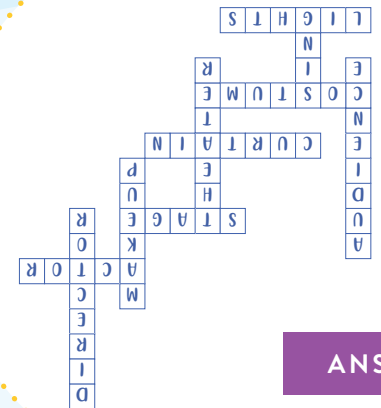
Use the clues below to solve the puzzle!

ACROSS

- 3. No performance is complete without one
- 5. The action happens on here
- 7. When this opens, it's showtime
- 8. The right outfit changes everything
- 10. Makes everything brighter

DOWN

- 1. Take your cues from this person
- 2. Put it all over your face
- 4. Who the actors want to entertain
- 6. The one at GPS has hundreds of seats
- 9. Be sure to hit all the right notes



ANSWER



MARCH

SUNDAY

MONDAY

TUESDAY

WEDNESDAY

THURSDAY

FRIDAY

SATURDAY

If I could participate in a theater production, I would want to _____.

GPS Fun Fact

When our school put on the musical *Mary Poppins*, a couple of the actors actually flew across the stage!

A special harness was used to help lift Mary and her friend Bert into the air during a few scenes. While it looked really cool, it took a lot of practice to get it just right.

SUNDAY	MONDAY	TUESDAY	WEDNESDAY	THURSDAY	FRIDAY	SATURDAY
		1	2	3	4	5
					 TERPSICHORD SPRING CONCERT	 TERPSICHORD SPRING CONCERT
6	7	 INTERNATIONAL WOMEN'S DAY 8	9	10	11	12
 DAYLIGHT SAVINGS TIME 13	 PI DAY 14	15	16	 ST. PATRICK'S DAY 17	18	19
					 MS PLAY AT MCCALLIE	 MS PLAY AT MCCALLIE
20	21	HOW ARE YOU FEELING TODAY? 22  PLACE EMOJI STICKER HERE	23	24	25	26
27	28	29	30	31		

Spring is Here!

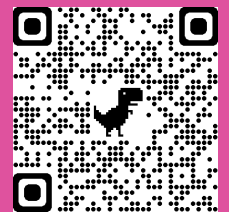
You may have heard of **MAY DAY AT GPS**—it's one of our most popular traditions where seniors get dressed up, carry bouquets, and get introduced in front of friends and family on Smith Courtyard. It's SO much fun! But it's not only the seniors who have a blast that day—girls in every grade can participate in some way. Our sixth-grade students get to dance in the pre-pageant event and show off the skills and creativity they have developed throughout the year!

COLOR IN THE MAY DAY BOUQUET!



scan me!

Scan the below QR code to watch what makes May Day such a special day at GPS!



APRIL

SUNDAY

MONDAY

TUESDAY

WEDNESDAY

THURSDAY

FRIDAY

SATURDAY

GPS Fun Fact

The first May Day celebration at GPS took place in 1914! It was a picnic with a Greek theme. Many years ago, the senior with the longest hair was selected as May Queen so she could braid her hair into a crown! Today we choose our May Queen and Court based on the ideals and values we hold dear such as graciousness, friendliness, and loyalty to friends and to GPS.

APRIL FOOLS DAY

1

RAMADAN BEGINS

2

3

WHAT'S THE WEATHER LIKE TODAY?

4

5

6

7

8

9

PLACE WEATHER STICKER HERE

10

11

12

13

14

GOOD FRIDAY & PASSOVER BEGINS

15

16

EASTER

17

18

19

20

21

EARTH DAY

22

23

UPPER SCHOOL SPRING MUSICAL

UPPER SCHOOL SPRING MUSICAL

24

25

26

27

28

29

30

MAY DAY

If I could choose the color of my
May Day dress
today, it would be _____.



Go Team!

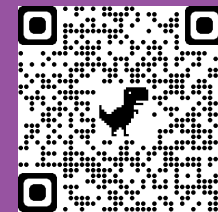
May is a special time for sports at GPS, since several state championships take place this month. Did you know there are **TWELVE DIFFERENT SPORTS** you can try in Middle School and **FIFTEEN** in Upper School at GPS? You can play a sport you've played in elementary school or try a new one! We always encourage you to step out of your comfort zone—after all, you may find a new favorite!

WE ARE THE BEST, WE ARE G-P-S!

SHOW YOUR SCHOOL SPIRIT!

scan me!

Hold a phone or tablet camera over this QR code and click the link to learn this cheer!



MAY

SUNDAY

MONDAY

TUESDAY

WEDNESDAY

THURSDAY

FRIDAY

SATURDAY

If I could try a new sport, it would be _____.



1

2

3

4

5

6

7

MOTHER'S DAY

8

9

10

HOW ARE YOU FEELING TODAY?

11

12

13

14



GPS COMMENCEMENT

15

16

17

18

19

20

21

22

23

24

25

26

27

28

29

MEMORIAL DAY

30

31

GPS Fun Fact

In 1909, GPS became the first school in Chattanooga to start a girls' basketball team. In 1974, we started the first girls' golf team, followed by the first girls' rowing team in 1994 and first girls' lacrosse team in 2005! Since then, GPS teams have won numerous regional and state championship titles.

Who's your Hero?

At GPS, we believe all girls are deserving of the title, and some of our biggest heroes are our graduates! **RECENT ALUMNAE** have been busy cleaning plastic from the oceans, inventing devices to help children with disabilities, writing books, and treating patients. One graduate even became the first female chief park ranger of Great Smoky Mountains National Park! If you need any proof that a GPS girl can do anything, look no further than your GPS sisters who have come before you!

GIRL POWER!

Unscramble the words below to show what these women are famous for!




AMELIA EARHART


OAVTRAI

--	--	--	--	--	--	--



ALEX MORGAN

SCROCE PYALRE



MALALA YOUSAFZAI

ATCTSIIV

--	--	--	--	--	--	--	--



JANE AUSTEN

ARUHTO

--	--	--	--	--	--	--



MARY JACKSON

MTATEANIHMCA

--	--	--	--	--	--	--	--	--	--	--	--



MAYA ANGELOU

OEPT

--	--	--	--	--

ANSWERS: Amelia Earhart: AVIATOR; Alex Morgan: SOCCER PLAYER; Malala Yousafzai: ACTIVIST; Jane Austen: AUTHOR; Mary Jackson: MATHEMATICIAN; Maya Angelou: POET

JUNE

SUNDAY

MONDAY

TUESDAY

WEDNESDAY

THURSDAY

FRIDAY

SATURDAY

GPS Fun Fact

Speaking of changing the world, you don't have to wait until you're a grownup to make a positive impact on the environment. A few years ago, two GPS Middle School students proposed that drinking straws should not be used in the dining hall because they are bad for the environment. They got up on stage during Chapel and presented slides that showed turtles and other marine life with plastic straws making them sick. Hundreds of their classmates signed the petition, and now we no longer use straws on campus!

I want to change the world
by _____.

1

2

WHAT'S THE WEATHER LIKE TODAY? 3

4

PLACE WEATHER STICKER HERE

5

6

7

8

9

10

11

12

13

FLAG DAY

14

15

16

17

18

FATHER'S DAY

19

20

21

22

23

24

25

26

27

28

29

30

this
GIRL
can

It's Summer!

Time for vacations, summer reading, back-to-school shopping, and more! At GPS, one of our favorite ways to celebrate summer is with summer camps. We offer many different options, depending on your interests—maybe there's a new sport you'd like to try or perhaps an art camp is right for you. Camps are a great way to try new things and meet new friends. Whatever you choose to do this summer, we hope you have **SO MUCH FUN!**

Z I H I U B H D G D A N C E A
I Z S N Z K J U P Z U S W S M
M T X U S H T L E G A U D H E
Y N O T P M R U L C X Z M A R
T G I G R E F E M T U E R R I
H W C C I A R Q K U G H W R C
I V C H G S D H X V S H K Y A
C I O T E R O W E L K I B P N
A O R H B E S C U R I X C O G
L L Q E Q A R G C K O D J T I
C I U A A D S L K E S E E T R
R N Q T F Z T K E L R U S E L
E L F E I I R A E A Y W V R D
A W U R L Z O M M T D X H C O
T F Y G M Y W W A F B I D L L
U B O X E H I V F J U A N O L
R G G Y H D N H Y P V M L G S
E P H O T O G R A P H Y S L Y
S I N G I N G Q A V C T B D M
Q I Z N L R D Y H N H D V T O

FIND THESE WORDS

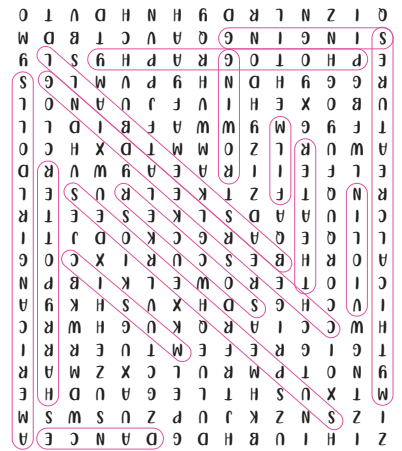
Mythical Creatures
Superheroes
Music
Film
Photography

Dance
Theater
Harry Potter
Singing
Violin

Basketball
Cheerleading
Soccer
American Girl Dolls
Rowing



ANSWERS



JULY

SUNDAY

MONDAY

TUESDAY

WEDNESDAY

THURSDAY

FRIDAY

SATURDAY

GPS Fun Fact

First published in 1909, *Kaleidoscope* is the name of our school yearbook. A group of students, along with faculty sponsors, work on the yearbook all year long, taking photographs, writing stories, and designing the layout. We also have a school newspaper and poetry magazine—both written by students!

1

2

3

INDEPENDENCE DAY 4

5

6

7

8

9

10

11

12

13

14

HOW ARE YOU FEELING TODAY? 15

16

PLACE EMOJI STICKER HERE

NATIONAL ICE CREAM DAY

17

18

19

20

21

22

23

24

25

26

27

28

29

INTERNATIONAL DAY OF FRIENDSHIP 30

31



This Summer,

I'm most looking forward to _____.

Back to School!

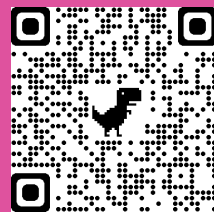
YOU HAVE A BIG YEAR AHEAD—we know you'll do great! Right before school starts at GPS, our new sixth-graders experience the Cat-Rat reveal. Cat-Rat is a fun program where every sixth-grader gets paired up with a senior—it's kind of like having a big sister! At the reveal, you'll spot your Cat because she'll be matching you. Sometimes they make matching T-shirts, headbands, or sunglasses, and other years it may be hats or even tutus!

HELP THESE CATS FIND THEIR RATS!



Hold a phone or tablet camera over this QR code to experience all the excitement surrounding the first day of classes at GPS!

scan me!



AUGUST

SUNDAY

MONDAY

TUESDAY

WEDNESDAY

THURSDAY

FRIDAY

SATURDAY

GPS Fun Fact

When school kicks off at GPS, students get to select which clubs they would like to participate in throughout the year. Clubs are a great way to meet new friends and find new interests! There are nearly 50 clubs to choose from between Middle and Upper School!

When I'm a Rat, I hope my Cat makes us *matching* _____.

1

2

WHAT'S THE WEATHER LIKE TODAY?

3

4

5

6

PLACE WEATHER STICKER HERE

7

8

9

10

11

12

13

14

15

NATIONAL TELL A JOKE DAY 16

17

18

19

20

GPS FIRST DAY OF CLASSES

21

22

23

24

25

WOMEN'S EQUALITY DAY 26

27

28

29

30

31



Knock, knock!

WHO'S THERE?
BROKEN PENCIL.
BROKEN PENCIL, WHO?
NEVER MIND, IT'S POINTLESS.



Fall is Here!

It's officially September, which means cooler weather is right around the corner. (Hello, leggings and scarves!) September is a very special month at GPS because it's the month our school was founded WAY back in 1906! Each year we celebrate Founders Day in honor of three special women—Tommie Payne Duffy, Eula Lea Jarnagin, and Grace McCallie. As teachers, they knew how important it was to educate girls, so they put their heads together to launch our school. **THIS YEAR, GPS IS CELEBRATING 117 YEARS!**

COLOR IN THE GPS ENTRANCE!



SEPTEMBER

SUNDAY

MONDAY

TUESDAY

WEDNESDAY

THURSDAY

FRIDAY

SATURDAY

GPS Fun Fact

Each grade has a unique class color uniform—6th grade: navy, 7th grade: light blue, 8th grade: lavender, 9th grade: green, 10th grade: pink, 11th grade: yellow, 12th grade: white—which is worn on special occasions, such as the first day of school and Class Day. Otherwise, girls can wear any color they choose!

1

2

3

4

LABOR DAY,
NATIONAL CHEESE
PIZZA DAY

5

6

7

8

9

10

NATIONAL
GRANDPARENTS
DAY

11

12

13

14

HISPANIC HERITAGE
MONTH BEGINS

15

16

17

GPS
FOUNDERS DAY

18

19

20

21

FIRST DAY
OF FALL

22

23

24

ROSH HASHANAH
BEGINS, NATIONAL
DAUGHTER'S DAY

25

HOW ARE YOU
FEELING TODAY?

26

27

28

29

30

PLACE
EMOJI
STICKER
HERE

Sweater
WEATHER

My
favorite thing

about fall is

_____.



We've got Spirit!

Halloween is later this month—we bet you have an awesome costume picked out already. We dress up at GPS for Halloween, too! But that's not the only time we dress up. **THIS MONTH KICKS OFF WITH SPIRIT WEEK**, which is a whole WEEK of dressing up! Each day has a different theme like Decades Day, Holiday Day, Character Day, and more! Spirit Week is always fun because it's a way for us to show our support for our school and each other.

Use these stickers to decorate your water bottle, notebook, or mirror and show your GPS spirit!

Cover your world!



OCTOBER

SUNDAY

MONDAY

TUESDAY

WEDNESDAY

THURSDAY

FRIDAY

SATURDAY

GPS Fun Fact

Our brother school, McCallie School, has a big rivalry football game in October, and we like to support them, too. Even though we don't go to school with boys, there are tons of fun activities we get to do together throughout the year!

1

2

3

YOM KIPPUR

4

5

6

WORLD SMILE DAY

7

8

9

INDIGENOUS PEOPLES' DAY

10

INTERNATIONAL DAY OF THE GIRL

11

12

13

NATIONAL DESSERT DAY

14

15

16

17

18

19

20

21

22

23

DIWALI

24

25

26

WHAT'S THE WEATHER LIKE TODAY?

27

28

29

PLACE WEATHER STICKER HERE

Boo!

30

HALLOWEEN

31

This year for Halloween, I'm dressing up as _____.



Have you heard of STEM?

STEM is a big deal at GPS because sometimes girls aren't expected to love STEM classes or pursue STEM-related careers when they grow up, but we think girls can do anything they want! We have a makerspace in our library where you can create things and work with different types of technology (think: 3D-printers, woodworking tools, drones, robots, and more). You can even record your own podcast or play games on our virtual reality headsets!

MAKE YOUR OWN GPS THINKING PUTTY!

Ingredient List:

4 oz. Elmers white glue

1/4 cup cornstarch

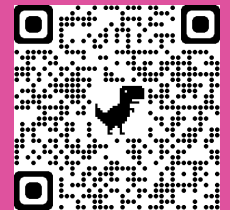
1/4 cup hot water

1/4 tsp. Borax

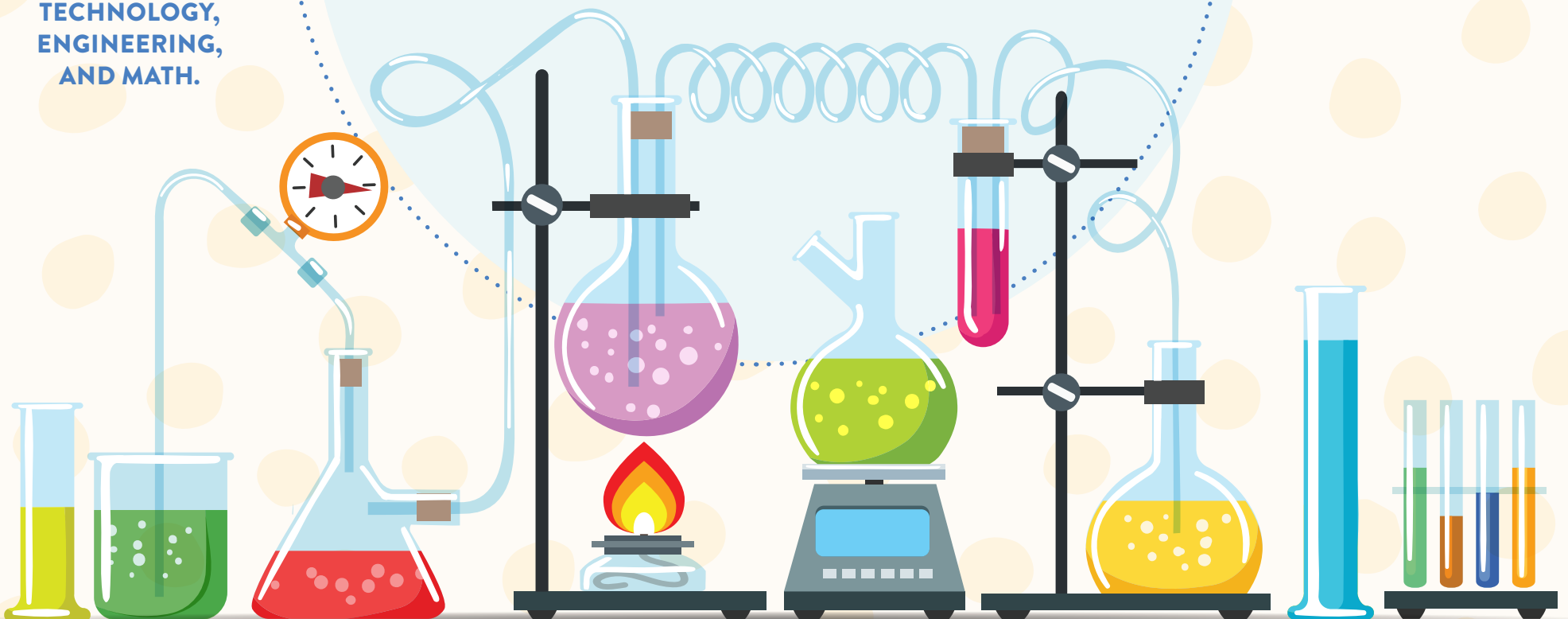
2-5 drops blue food coloring

scan me!

Scan the QR code for a step-by-step instructional video!



It stands for
**SCIENCE,
TECHNOLOGY,
ENGINEERING,
AND MATH.**



NOVEMBER

SUNDAY

MONDAY

TUESDAY

WEDNESDAY

THURSDAY

FRIDAY

SATURDAY

NATIVE AMERICAN
HERITAGE MONTH
BEGINS

1

HOW ARE YOU
FEELING TODAY? 2

PLACE
EMOJI
STICKER
HERE

3

4

5

DAYLIGHT SAVINGS 6

7

STEM DAY

8

9

10

VETERANS DAY 11

12

WORLD
KINDNESS DAY 13

14

15

16

17

18

19

TERPSICHORD
THANKSGIVING
CONCERT

UNIVERSAL
CHILDREN'S DAY 20

21

22

23

THANKSGIVING 24

25

26

27

28

29

30

GPS Fun Fact

Every sixth-grader gets to take dance, even if she's never taken a dance lessons before. We think dancing is fun and helps girls be active and gain more confidence. If you love dance—and many girls discover they do—you can take more dance classes and even one day try out for Terpsichord, one of the longest-running school dance programs around!

When I grow up,
I want to be _____.



Happy Holidays!

DO YOU AND YOUR FAMILY HAVE ANY SPECIAL HOLIDAY TRADITIONS?

At GPS, we celebrate all month. From peppermint cupcakes in the cafeteria to ugly sweater days, movies, and Cat-Rat cookies and hot cocoa, there is always something exciting to look forward to. Plus, some special holiday elves stop by to turn our campus into a true winter wonderland! We love providing our students some fun before sending them home for rest, relaxation, and time with family.

HOW I'LL SPEND MY WINTER VACATION

To be honest, I will probably spend my winter vacation staying in bed as long as I can! My favorite thing to wear while lounging at home are my _____ . When I'm not catching up on my sleep, my family knows I'll probably be _____ or _____ .

ADJECTIVE

ITEM OF CLOTHING

ACTION VERB

ACTION VERB

Every year we always eat _____ for a family meal, but if I was in charge, we would eat _____ and _____ .

FOOD

FOOD

FOOD

My favorite holiday movie is _____ .

MOVIE

The best scene is when _____ .

CHARACTER

VERB

While it's fun to be out of school, what I miss most when I'm not there is _____ and my best friend _____ . I guess I'll be going back soon enough, and then I'll wish I was _____ instead!

NOUN

PERSON

ACTIVITY



DECEMBER

SUNDAY

MONDAY

TUESDAY

WEDNESDAY

THURSDAY

FRIDAY

SATURDAY

GPS Fun Fact

Each year members of the junior class receive their class rings. A design that's mostly been unchanged for decades, the GPS crest is set into a black onyx stone, but the girls can choose between a silver or gold ring. Each girl's graduation year and initials are also on the ring.

NATIONAL COOKIE DAY

4

5

6

7

8

9

10

WHAT'S THE WEATHER LIKE TODAY?

11

12

13

14

15

16

17

PLACE WEATHER STICKER HERE

HANUKKAH BEGINS

18

19

20

21

22

23

CHRISTMAS EVE

24

CHRISTMAS DAY

25

KWANZAA BEGINS

26

27

28

29

30

NEW YEAR'S EVE

31

My favorite holiday tradition is _____.



I AM A

Strong

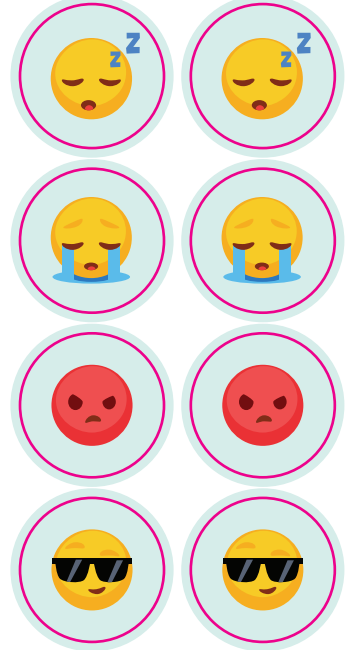
BEAUTIFUL

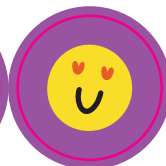
CONFIDENT

Fearless

GIRL

Bonus! Tear this page out and hang it on your wall to use as a mantra all year long!





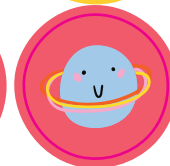
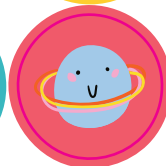
STUDY

STUDY

STUDY



do it



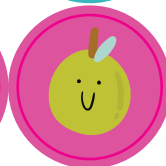
VACATION

VACATION

VACATION



make TODAY great



BIG DAY

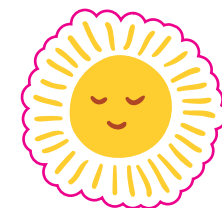
BIG DAY

BIG DAY

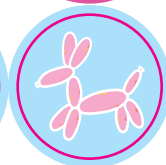
DONE

DONE

DONE



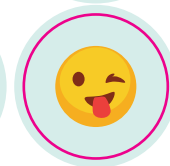
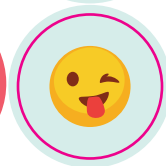
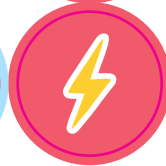
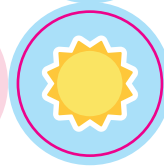
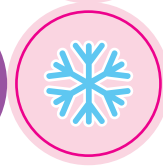
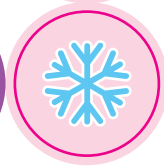
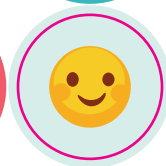
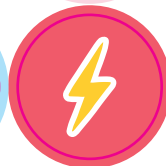
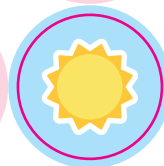
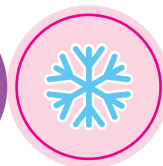
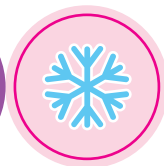
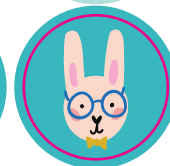
GOOD JOB



WEEKEND

WEEKEND

WEEKEND



THIS WEEK

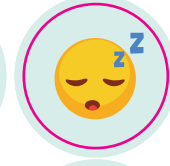
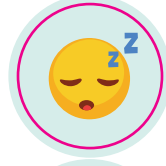
THIS WEEK

THIS WEEK

THIS WEEK

THIS WEEK

THIS WEEK



NOTES

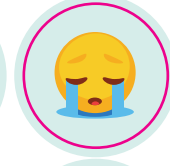
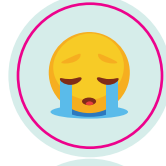
NOTES

NOTES

NOTES

NOTES

NOTES



Important

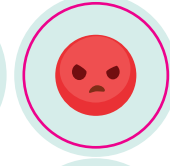
Important

Important

Important

Important

Important



DON'T 4GET

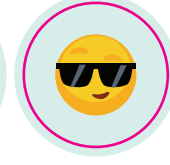
DON'T 4GET

DON'T 4GET

DON'T 4GET

DON'T 4GET

DON'T 4GET



THERE'S A LOT
TO LOOK FORWARD TO IN

Middle School!



MEETING NEW FRIENDS

Middle school is a time for you to branch out and meet new people! At GPS, the friends you make will become like sisters. Sometimes people think because we go to a girls' school there will be lots of drama or gossip, but it's actually the opposite! At a girls' school, we laugh and sing together, and we just get each other. We all support each other's dreams. Each day is just another opportunity to make memories with our besties!

TRYING NEW THINGS

Middle school is all about stepping out of your comfort zone and learning new things. You may even fail sometimes, and that's OK! We all do, but that makes us stronger. At GPS, you are encouraged to try anything you want. Whether it's a club, a sport, or an after school activity, there's nothing holding you back! Trying new things helps us learn what we like and what we don't like.

MAKING YOUR OWN DECISIONS

In elementary school, you are probably used to walking in line with your class, eating lunch at the same table, and sitting in assigned seats. At GPS, middle school provides more independence, and girls are encouraged to be themselves and to make their own decisions. Are you ready to choose your own clubs and activities? What about your lunch? Sandwich, salad, pizza—you decide! (Oh, and did we mention our famous chocolate chip cookies?!) You will even get to pick certain classes that interest you!

We look forward to getting to know you!
VISIT OUR WEBSITE TO LEARN MORE ABOUT GPS, AT GPS.EDU.

